



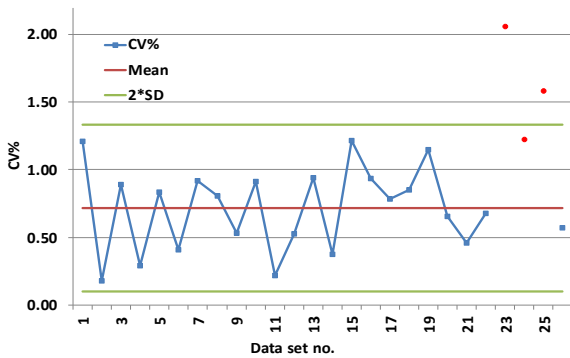
## DHI MIXED PIGMENTS

Vials or filters with pigment mixtures useful for QA/QC

When analysing phytoplankton pigments by High Performance Liquid Chromatography (HPLC) for monitoring phytoplankton, Quality Assurance/Quality Control (QA/QC) should be conducted as the systematic monitoring and evaluation of the various parameters. This will ensure that predefined quality standards or performance metrics are met and will monitor if the HPLC method performs according to expectations.

### QA/QC MEASURES WILL HELP YOU TO:

- Control how well the HPLC elutes and separates the pigments
- Control the pigment identity
- Control the precision of the HPLC by repeated injections (see figure below)
- Control the accuracy over time to validate the calibration and your method



Coefficient of variation (CV%) of DHI mixed pigments injected three times each time a set of samples were analysed. Three instances (red squares) were identified where the CV% increased. A fault in the HPLC auto-injector was corrected and the CV% was restored.  
© DHI

### VIALS WITH PIGMENT MIXTURES OR FILTERS WITH ALGAE CULTURES

Choose between:

1. Ready-to-use vials with dissolved mixed pigments for daily check of your HPLC performance
2. Filters with algae cultures suitable when QA/QC should include the extraction procedures when analysing natural samples

Both mixtures contain more than 20 pigments, which are important when monitoring phytoplankton. They can help you to create your own pigment library in the HPLC software, and to identify the pigments in your samples based on the relative retention times, elution order and absorption. Repeated injections can be used to check the method precision and accuracy as part of the method validation.

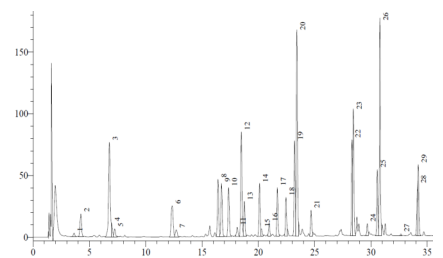
### BENEFITS

Both filters with algae cultures and vials with mixtures of pigments are useful for QA/QC of pigment analyses when controlling:

- Pigment elution and separation
- Identification of peaks
- Precision and accuracy of the HPLC method
- The extraction procedures (filters only)

### FEATURES

- Both filters and vials contain at least 20 different phytoplankton pigments
- The mixtures of pigments, which are dissolved in 90% acetone, are contained in ready-to-use 1ml HPLC vials with a nitrogen atmosphere
- The filters contain a mixture of different algae cultures, which should be extracted
- Both types of mixtures are delivered with a Certificate of Analysis



### DHI LAB PRODUCTS

Agern Allé 5  
DK-2970 Hørsholm  
Denmark

+45 4516 9200 Telephone  
+45 4516 9292 Telefax

[c14@dhigroup.com](mailto:c14@dhigroup.com)  
[www.labproducts.dhigroup.com](http://www.labproducts.dhigroup.com)