



DHI LAB PRODUCTS

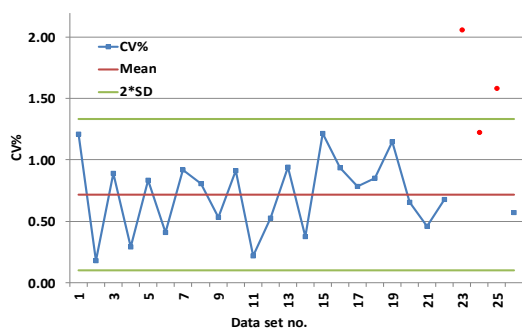
## DHI MIXED PIGMENTS

Vials with pigment mixtures suitable for QA/QC

When monitoring phytoplankton by analyzing phytoplankton pigments by High Performance Liquid Chromatography (HPLC) QA/QC should be conducted systematically to ensure that predefined quality standards or performance metrics are being met and that the HPLC is performing as expected.

### QA/QC MEASURES CAN HELP YOU TO:

- Control how well the HPLC elutes and separates the pigments
- Control the pigment identity
- Control the precision of the HPLC by repeated injections (see figure below)
- Control the accuracy over time to validate the calibration and your method



Coefficient of variation (CV%) of DHI mixed pigments injected three times for each data set. Three instances (red squares) where the CV% increased were identified. A fault in the HPLC auto-injector was corrected and the CV% was restored.

### VIALS WITH PIGMENT MIXTURES

Ready-to-use vials with dissolved mixed pigments for daily check of your HPLC performance. Available with two different concentrations:

**PPS-MIX-1:** especially suitable when analysing phytoplankton pigments in meso-eutrophic or eutrophic areas. The chlorophyll a concentration is 3-5 µg/mL.

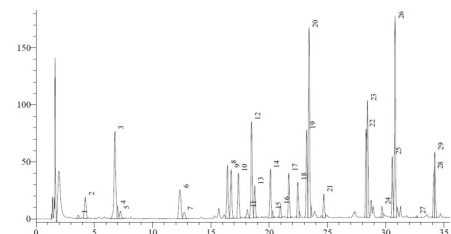
**PPS-MIX-2:** especially suitable when analysing samples with pigment concentrations near the detection limit, e.g., in oligotrophic areas. The chlorophyll a concentration is 0.1-0.3 µg/mL.

Both mixtures contain more than 20 common pigments, which are important when monitoring phytoplankton. They can help you to create your own pigment library in the HPLC software, and to identify the pigments in your samples based on the relative retention times, elution order, and the absorption properties.

### DHI MIXED PIGMENTS

#### FEATURES

- Vials with mixed pigment contain more than 20 different phytoplankton pigments dissolved in 1 mL 90% acetone
- Distributed in HPLC vials with a nitrogen atmosphere
- The pigment mixtures are delivered with a Certificate-of-Analysis which shows the elution order and the content of pigments



#### DHI PIGMENT STANDARDS

We produce more than 45 different pure pigment standards, especially suitable for HPLC calibration when analyzing phytoplankton pigments.



#### DHI LAB Products

Agern Allé 5  
DK-2970 Hørsholm  
Denmark

+45 4516 9200 Telephone

[c14@dhigroup.com](mailto:c14@dhigroup.com)  
[www.labproducts.dhigroup.com](http://www.labproducts.dhigroup.com)